



TECNOPALI
NORTH EUROPE

LATTICE STEEL STRUCTURES



ABOUT US

TECNOPALI NORTH EUROPE IS THE LARGEST STEEL LIGHTING POLE, HIGH MAST AND ACCOMPANYING STEEL STRUCTURE PRODUCER IN THE BALTICS, LOCATED IN DAUGMALE, LATVIA.

TECNOPALI NORTH EUROPE PRODUCES A WIDE RANGE OF PRODUCTS



CONICAL, STEPPED
AND CYLINDRICAL
POLES



PASSIVE SAFETY
POLES (HE2; HE3)



MONOTUBULAR
MASTS



CATENARY
POLES



DECORATIVE
POLES



LATTICE POLES,
MASTS AND
PORTALS



TRAFFIC LIGHT AND
SIGN STRUCTURES



CUSTOM DESIGN
AND PROJECTS

FLEXIBLE PRODUCTION, HIGH QUALITY STANDARDS AND WIDE COATING OPTIONS TOGETHER WITH HIGHLY SKILLED ENGINEERS ALLOWS **TECNOPALI NORTH EUROPE** TO OFFER BOTH STANDARD AND HIGHLY CUSTOM PRODUCTS WHICH MEET INDIVIDUAL NEEDS OF OUR CUSTOMERS ALL ACROSS EUROPE.

OUR PRODUCTS ARE DESIGNED AND ENGINEERED TO MEET THE STRICTEST INTERNATIONAL STANDARDS: EN 40-5, EN12767 FOR LIGHTING POLES; EN 1090 FOR STEEL STRUCTURES; EN 12899 FOR TRAFFIC LIGHTS AND ROAD SIGNS.

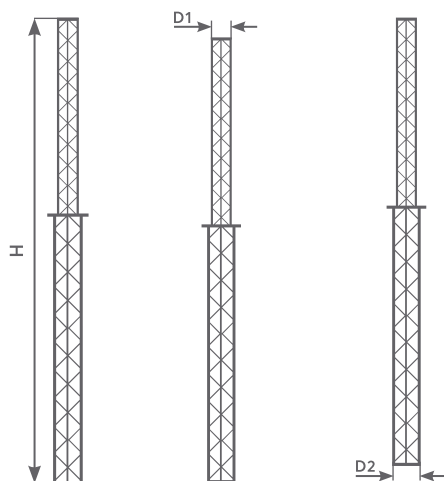
CONTACTS

TEL: +371 67148855 | E-MAIL: SALES@TECNOPALI.LV | WWW.TECNOPALI.LV

HOW TO FIND US

"VECRATNIEKI", ĶEKAVAS NOV.,
DAUGMALES PAG., LV-2124, LATVIA

FLOODLIGHT MASTS



TYPE	HEIGHT	TOP Ø	BOTTOM Ø	SECTIONS	MAX TOP LOAD VREF=24m/s
CODE	HP (m)	D1 (mm)	D2 (mm)	PCS	m²
L3CYP12000-250/350B-2016	12	250	350	2	0,8
L3CYP12000-250/350B-2520	12	250	350	2	1,2
L3CYP15000-300/400B-2016	15	300	400	2	0,4
L3CYP15000-300/400B-2520	15	300	400	2	1,2
L3CYP15000-300/400B-3025	15	300	400	2	2,2
L3CYP18000-200/400B-252016	18	200	400	3	0,4
L3CYP18000-200/400B-302520	18	200	400	3	0,8
L3CYP18000-200/400B-353025	18	200	400	3	1,2
L3CYP18000-300/500B-302520	18	300	500	3	1,8
L3CYP18000-300/500B-353025	18	300	500	3	2,8
L3CYP20000-300/500B-252016	20	300	500	3	0,4
L3CYP20000-300/500B-302520	20	300	500	3	0,8
L3CYP20000-300/500B-353025	20	300	500	3	1,8
L3CYP20000-300/500B-403530	20	300	500	3	2,8
L3CYP22000-300/600B-25201610	22	300	600	4	0,4
L3CYP22000-300/600B-30252016	22	300	600	4	1,2
L3CYP22000-300/600B-35302520	22	300	600	4	2,2
L3CYP22000-300/600B-40353025	22	300	600	4	2,8
L3CYP24000-300/600B-30252016	24	300	600	4	0,8
L3CYP24000-300/600B-35302520	24	300	600	4	1,2
L3CYP24000-300/600B-40353025	24	300	600	4	2,2
L3CYP24000-300/600B-45403530	24	300	600	4	2,8

DESIGN



MASTS ARE DESIGNED, PRODUCED AND CE CERTIFIED ACCORDING TO EN 1090



DESIGN ACCORDING TO EN 1993-3-1:2012 EUROCODE



MADE OF S355 CLASS ROUND BARS



HOT DIP GALVANIZED ACCORDING TO EN ISO 1461 FOR CORROSION PROTECTION



ON THE REQUEST MASTS COULD BE FULLY PAINTED OR ROOT PAINTED

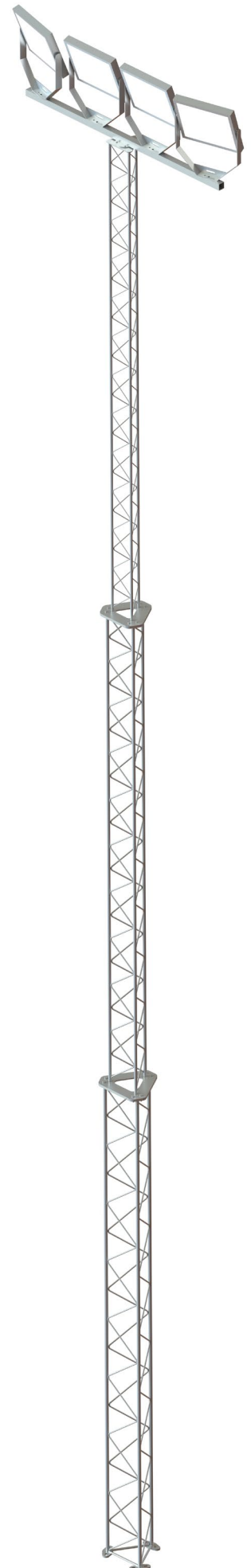


STRUCTURES CONSIST OF 2-4 SECTIONS, ASSEMBLED BY MEANS OF BOLTED CONNECTION

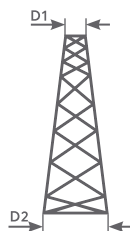
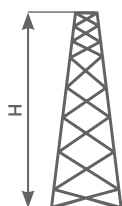
PREFABRICATES REINFORCED CONCRETE FOUNDATIONS ARE AVAILABLE ON THE REQUEST.

OTHER MODELS OF MASTS WITH DIFFERENT HEIGHTS AND LOADS COULD BE PROVIDED ON THE REQUEST.

DIFFERENT INSTALLATION ACCESSORIES ARE AVAILABLE.
SEE PAGE 9 FOR MORE INFO.



ANGLED FLOODLIGHT MASTS



HEIGHT	TOP	BOTTOM	MAX TOP LOAD VREF=24M/S
H (mm)	D1 (mm)	D2 (mm)	m ²
15000	200	800	1
20000	200	1000	1.2
25000	200	1200	1.5
30000	300	1500	2.5
35000	300	2000	3

DESIGN



MASTS ARE DESIGNED,
PRODUCED AND CE
CERTIFIED ACCORDING
TO EN 1090



DESIGN ACCORDING
TO EN 1993-3-1:2012
EUROCODE



MADE OF S355 CLASS
STEEL ANGLES



ON THE REQUEST
MASTS COULD BE
FULLY PAINTED



STRUCTURES CONSIST
OF 2-4 SECTIONS,
ASSEMBLED BY
MEANS OF BOLTED
CONNECTION



MASTS COULD BE
EQUIPPED WITH
CLIMBING LADDERS,
PLATFORM, CROSSARMS
AND OTHER
ACCESSORIES

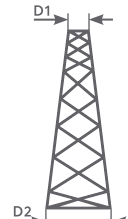
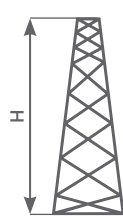


HOT DIP GALVANIZED
ACCORDING TO EN ISO
1461 FOR CORROSION
PROTECTION

OTHER MODELS OF MASTS WITH DIFFERENT HEIGHTS AND LOADS COULD BE PROVIDED ON THE REQUEST.

DIFFERENT INSTALLATION ACCESSORIES ARE AVAILABLE. [SEE PAGE 9 FOR MORE INFO.](#)

TELECOMMUNICATION MASTS



HEIGHT	TOP	BOTTOM	MAX TOP LOAD VREF=24M/S
H (mm)	D1 (mm)	D2 (mm)	m ²
25000	400	2000	14
30000	500	2000	12.5
35000	750	3000	12
40000	1000	4000	12
45000	1000	4500	10.5

DESIGN



MASTS ARE DESIGNED,
PRODUCED AND CE
CERTIFIED ACCORDING
TO EN 1090



DESIGN ACCORDING
TO EN 1993-3-1:2012
EUROCODE



MADE OF S355 CLASS
STEEL ANGLES



HOT DIP GALVANIZED
ACCORDING TO EN ISO
1461 FOR CORROSION
PROTECTION



ON THE REQUEST
MASTS COULD BE
FULLY PAINTED



STRUCTURES ARE FULLY
DEMOUNTABLE.
ALL ANGLES ARE BEING
ASSEMBLED BY MEANS
OF BOLTED CONNECTION

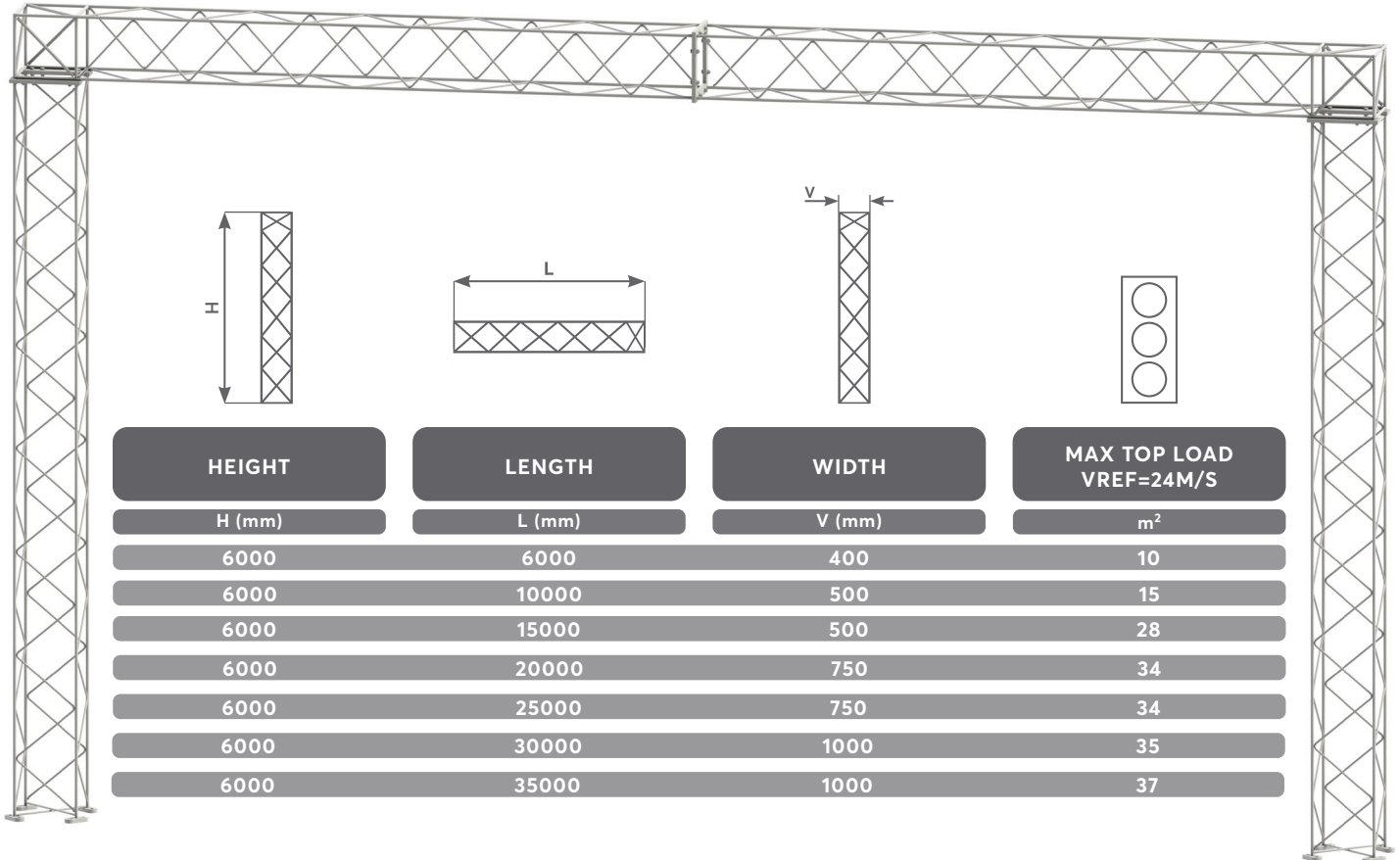


MASTS COULD BE
EQUIPPED WITH CLIMBING
LADDERS, PLATFORM,
CROSSARMS AND
OTHER ACCESSORIES.

OTHER MODELS OF MASTS WITH DIFFERENT HEIGHTS AND LOADS COULD BE PROVIDED ON THE REQUEST.

DIFFERENT INSTALLATION ACCESSORIES ARE AVAILABLE. [SEE PAGE 9 FOR MORE INFO.](#)

TRAFFIC PORTALS



DESIGN



PORTALS ARE
DESIGNED, PRODUCED
AND CE CERTIFIED
ACCORDING TO
EN 1090



SQUARE CROSS
SECTION



MADE OF S355 CLASS
ROUND BARS



HOT DIP GALVANIZED
ACCORDING TO EN ISO
1461 FOR CORROSION
PROTECTION



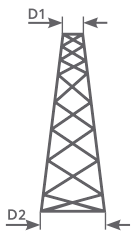
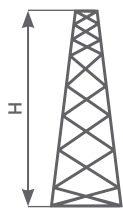
ON THE REQUEST
POLES COULD BE
FULLY PAINTED OR
ROOT PAINTED



STRUCTURES CONSIST
OF 2-4 SECTIONS,
ASSEMBLED BY
MEANS OF BOLTED
CONNECTION

OTHER MODELS OF PORTALS WITH DIFFERENT HEIGHTS AND LOADS COULD BE PROVIDED ON THE REQUEST.

CATENARY POLES



HEIGHT	TOP	BOTTOM	MAX CATENARY LOAD
H (mm)	D1 (mm)	D2 (mm)	kN
8000	200	400	6
9000	250	500	8
10000	250	500	10
11000	250	550	12
12000	300	550	14

DESIGN



POLES ARE DESIGNED,
PRODUCED AND CE
CERTIFIED ACCORDING
TO EN 1090



MADE OF S355 CLASS
ROUND BARS



HOT DIP GALVANIZED
ACCORDING TO EN ISO
1461 FOR CORROSION
PROTECTION



ON THE REQUEST POLES
COULD BE FULLY PAINTED
OR ROOT PAINTED



SPECIFIED LOAD APPLIED
ON TOP OF THE POLE

OTHER MODELS OF PORTALS WITH DIFFERENT HEIGHTS AND LOADS COULD BE PROVIDED ON THE REQUEST.

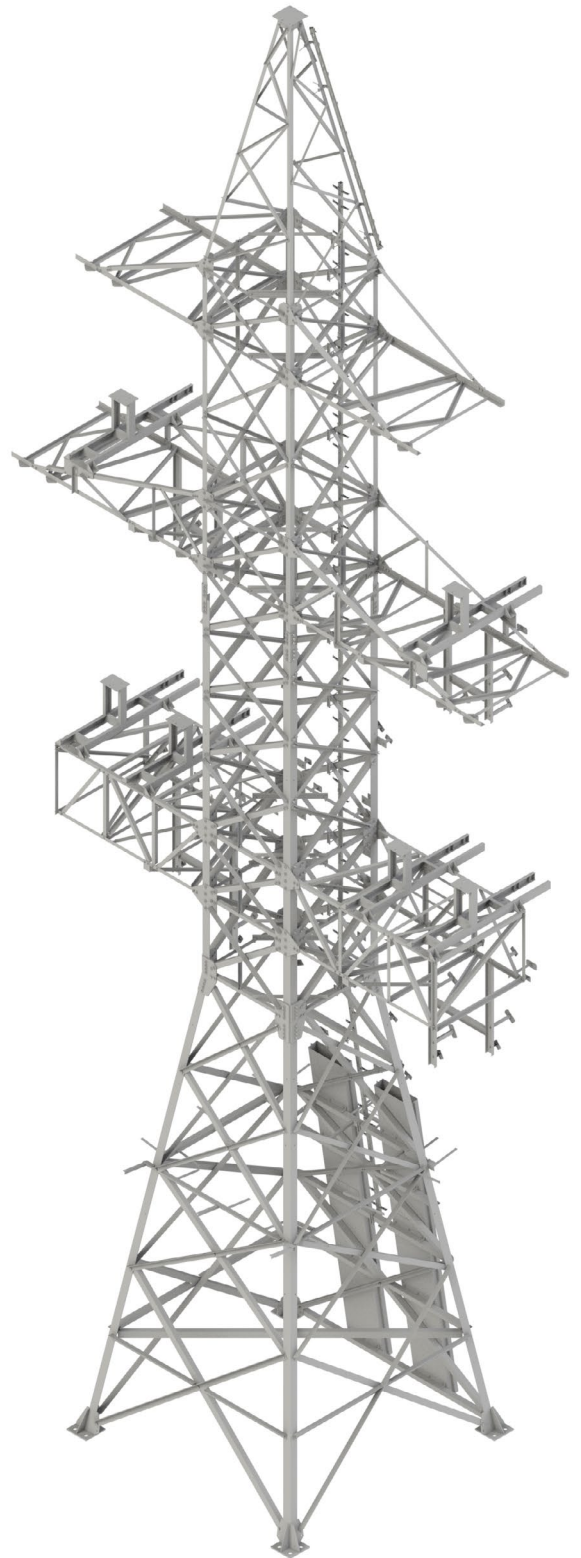


POWER TRANSMISSION TOWERS AND SUBSTATIONS

ABOVE STANDARD LATTICE MASTS AND CONSTRUCTIONS, TECNOPALI NORTH EUROPE HAS KNOWLEDGE AND EXPERIENCE IN PRODUCTION OF LATTICE CONSTRUCTIONS FOR POWER TRANSMISSION, SUBSTATIONS AND TOWERS FOR HIGH VOLTAGE OVERHEAD POWER LINES.

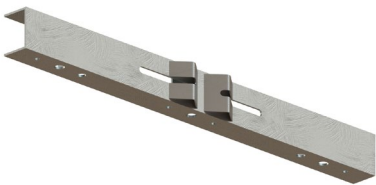
WITH HIGHLY SKILLED PRODUCTION TEAM, TECNOPALI NORTH EUROPE ENSURE TO FULFILL THE STRICTEST PROJECT PRODUCTION AND QUALITY REQUIREMENTS.

STEEL STRUCTURES ARE BEING SUPPLIED BASED ON PARTICULAR PROJECT DESIGN.

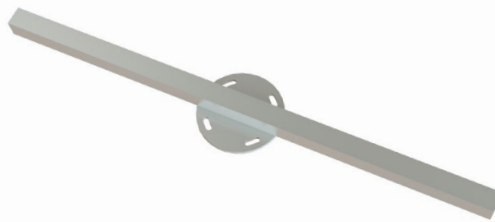


ACCESSORIES

MASTS COULD BE ADDITIONALLY EQUIPPED WITH ACCESSORIES FOR FLOODLIGHTS OR OTHER EQUIPMENT INSTALLATION, CLIMBING LADDERS AND ANCHOR BOLTS



CROSSARM



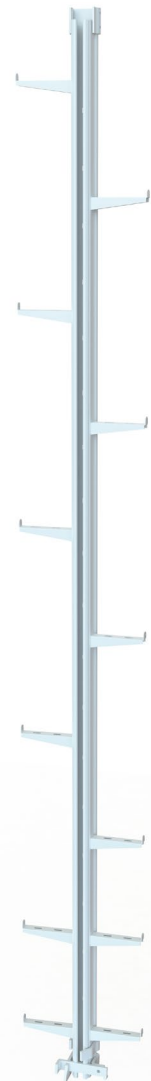
TRAVERSE



PLATFORM



ANCHOR
BOLTS SET



CLIMBING
LADDERS



